

March
2013

MuseumMessenger

Quarterly Newsletter of the Key Peninsula Historical Society



Key Peninsula Historical Society

Goals for 2013 (developed October 16, 2012,)

1. Achieve complete documentation of all artifacts in the museum to include identifying, labeling, photographing and entering in data base.
2. Collect oral histories from distinguished members of the community.
3. Plan current and future facility growth for increased space, storage, exhibit display, educational programming and presentations.
4. Increase membership and community participation through improved outreach activities.
5. Work toward national museum standards that can lead to accreditation

President's Message

As signs of spring appear in the garden, we at the Key Peninsula Historical Society plan for brighter days ahead with a new exhibit, *Tall trees, Tall Men, Tall Tales, 100 years of Logging on the Key Peninsula*, under the guidance of Cathy Williams, with Christine Anderson, Colleen Slater, Frank Slater, Don Mills and Joyce Niemann.

Our calendar is filling up with a logger's round table on March 9 and our annual meeting on **March 30**, with **Tom Van Slyke as guest speaker** to talk about his family's rich heritage in the logging industry. We will also be electing officers and voting on amendments to our bylaws at that meeting, so please be there. The amendments, developed by Jennifer Nielson, are attached to this electronic newsletter or available in the museum for your review.

Teachers Connie Hildahl and Christine Anderson have begun presenting classes to home-schooled students each Friday morning.

We will have our Open House on **May 11** in conjunction with the Livable Community Fair. Our **June 29th** picnic will be held at the home of the late Dale Boquist to view his extensive display of logging artifacts. Thank you to his son, Dustin Boquist, for hosting us.

July will see us on the waters of Case Inlet for our boat tour fund raiser scheduled for **July 13** and **July 14**. This will be an opportunity to learn more about the history of the Key Peninsula.

Thanks to all of you who have continued to support us with the time, funds and treasures. We were recently able to catch up on accession of several items donated to our museum by the accession committee of Noel Niemann and Don Mills

Thanks to our continuing partnership with the Key Pen Parks we are able to rent a stall at Gateway Park, and with the help of local Boy Scouts Alex Ramirez and Kelson Mills, and dads Gilbert Ramirez, Matthew Mills and Glen Pszczola, we have moved some of our larger items to storage. It allows much more versatility in our displays. We have also purchased a new display case for the popular high school grad photos of the classes of 19xx-19 who attended Vaughn High School. They are now easily accessible and visible.

With the start of our museum season we can renew our commitment to preserving and presenting our heritage for our families and our community. This provides all of us an opportunity to volunteer as docent, board member, committee member, data entry person, exhibit creator, teacher or whatever you can imagine. So come on down and join the fun.

Judy Mills, President
253-884-2511 or djmills@centurytel.net

I long to accomplish a great and noble task, but it is my chief duty to accomplish small tasks as if they were great and noble. – Helen Keller

☛ **DUES ARE DUE BY MARCH 31, 2013** ☛

We are changing to a calendar year so in 2014 they will be due in January.

ANNUAL MEETING — Saturday, March 30 12 noon –3 pm VFW Room

Please bring a dish to share. Remember to bring your own tableware.

Featured Museum Exhibit

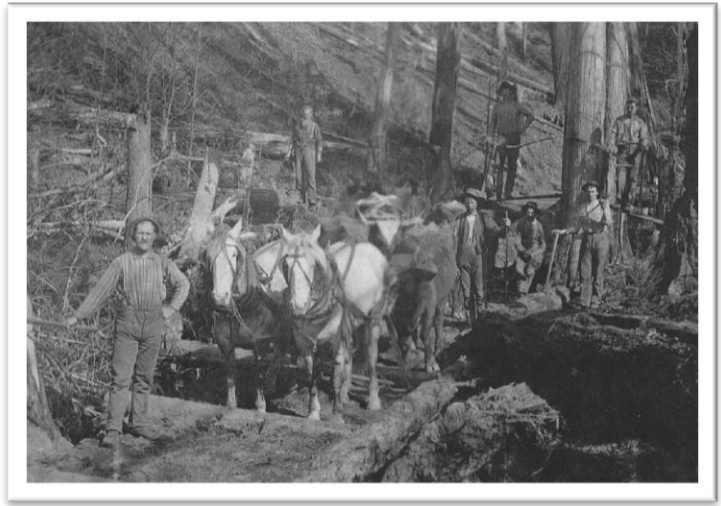
Tall Trees, Tall Men, Tale Tales

100 Years of Logging on the Key Peninsula

Full-scale logging on the Key Peninsula started in the mid-1800s. The Hudson Bay Company, the first white settlement in South Puget Sound, needed logs for the construction of Fort Nisqually. The gold rush in California created a need for timber in the construction of the mines. In 1851, Sea Captain Lafayette Balch arrived in the South Puget Sound and founded the town of Port Steilacoom with the purpose of beginning a coast-wide trade between Puget Sound and San Francisco—shipping logs and lumber. Joseph Shettlerow started shoreline logging in Filucy Bay in 1859. Settling in Lakebay in 1887, German immigrant Carl Lorenz logged and established a water-driven sawmill that mainly produced lumber for the local community. In order to get his lumber to market, he turned to the boat-building business. A chance meeting in 1882 between Nicholas Petersen and Harry Winchester turned into a life-long business partnership. They logged the shores of Glencove, Minter Bay and Wauna, establishing floating logging camps that could be moved as the need arose. The Peterson's later built the historic Glencove Hotel, where Harry Winchester had a permanent room reserved for him.

During the 1880s—1910s, donkey engines, steam engines, band saws and growing markets boosted logging. The 1930s—1950s saw the development of high leads and spar trees, chain saws, tractors and clear cutting.

Come and learn about the horses and oxen, the wannigans and how Filucy Bay got its name. Spend some time browsing the many artifacts the museum owns, along with many that have been loaned to us for this exhibit.. Ever wonder about the names of the roads on the Key? Come discover the history!



Near Vaughn, 1890s

William Tillman, father James on springboard, 1918; Wallace, son of William, 8, below.



Calendar of Events

Date and Time

Annual Membership Meeting, VFW Room, Civic Center

March 30

Opening Day: **Tall Trees, Tall Men, Tall Tales**
100 Years of Logging on the Key Peninsula

March 30

Open House

May 11

Summer Picnic — Boquist Barn

June 29

Fund Raiser — Boat trip on Case Inlet

July 13, 14

KPHS Pioneer Picnic

September —TBA

Farm Tour

October 5

Fall Membership

November, —TBA

KPHS Open House/CC

November 9

Close for Winter

November 30

Museum board meetings are held the first Thursday of every month at the museum, 11:00am to 1:00 pm . All are welcome.

Museum Activities — 2013

Statistics Report

This report is from January 1 through December 31, 2012 (Note: the museum is closed in December and January for exhibit development, renovation, etc.)

Visitors	
Guest book sign-in	426
Faraway Centennial Fundraising Events, Boat tours (2) BBQ	270
Farm tour contacts	~ 400
Activities	Hours
Regular Docent Hours	285
Board Meetings	194
Special Openings, Contacts, Research, Phone Calls, Emails, Inventory, Data Entry	88
Design and Construction of Exhibits — Upper Sound and Penrose Pt,	121
Clean, Reorganize, Construction	142
Workshops: Heritage League, Fort Nisqually, Greater Gig Harbor Foundation	56
Membership Annual Mtg., Pioneer Picnic, Summer Picnic, Fall Picnic	148
Newsletters (4)	53
Bylaws	16
Booths,(set-up, manned, cleaned up)	
Open Houses, Spring and Fall (with Winter Warm Up)	82
Old Timers' Day	20
Farm Tour	42
School and Community Educational Presentations	41
Goals Retreat	40
Fundraising and First Annual Fund Letter	35
Faraway Centennial fundraising Events: 2 Boat tours and BBQ	230
Total Hours Logged by KPHS Members	1,592

KPHS Home School Classes

KPHS is holding an eight week session on Early Native Americans in the Pacific Northwest, Early Explorers, and Early Logging on the Key Peninsula. We meet each Friday morning. There are ten students who are home-schooled in our class with parent participation. Christine Anderson and Connie Hildahl are teaching the class. Last week the students created cedar weavings, which are on display in our museum. This week they will add a giant puzzle of Early Explorers. Come by and see their work! What a great way to share our history! ✂

Memorial Donations

Memorial donations have been received from Lois Crandall in memory of her son, **Rick**; from Dulcie Schillinger, Joyce Niemann, Judy and Don Mills in memory of **Dale Boquist**, friend of the museum; and from Shirley Olson, Dulcie Schillinger, Joyce Niemann, Judy and Don Mills in memory of **Jane Van Slyke**, a life long resident and friend of the museum.

All memorial donations are used to preserve and publish the history of the Key Peninsula and is a wonderful way to remember loved ones and friends.

Boy Scout Eagle Project

Hello, my name is Kelson Mills and I am doing my Eagle Scout project at the Key Peninsula Historical Museum. We will be correlating, labeling and photographing as many museum objects as possible. My fellow Boy Scouts will be volunteering for this project and I need museum member volunteers to help, especially with identification. Please call me at 253-883-2511 for dates and times. Thank You!

Boy Scouts and dads moving artifacts from the museum to storage at Gate Way park



Annual Fund Donors

We would like to thank the following for their gifts to the KPHS Annual Fund.

Kurt and Christine Anderson	Fred and Wanda Leenstra
Wayne and Delores Argabright	Richard and Elizabeth Lyons
Randy and Lindsey Babich	Marianne I. McColley
Cliff Bartell	Don and July Mills
Lynn and Nancy Carr	John and Laurie Nichols
Barbara A. Copley	Harry and Marge Nygard
Lucille Daniel	William Roes, M.D.
Richard and Joy Hanson	Jeff and Christine Tritt
Rev. Sylvia Haase	Clark and Barbara Van Bogart
Mike and Denise Hays	Douglas and Elizabeth Wheeler
Barbara and George Heard	Michael and Jean Xu
Rich and Connie Hildahl	

Key Peninsula Historical Society Membership Form

Name: _____

Address: _____

E-mail: _____

Phone: _____

Level of membership: Single - \$10 Family - \$25 Patron - \$10 Business - \$50

New Renew

Museum donation or gift: _____ Total _____ Check _____ Cash _____

Are you interested in volunteering? Yes No Maybe later

Mail to: Key Peninsula Historical Society, 17010 S. Vaughn Rd. KPN, Vaughn, WA 98349. Or bring to the annual Meeting march 30.

You can help!

Short on funds but you want to help the museum this year? Here are some ideas that might work for you:

- **Be a docent for the museum.**
Help keep the museum open by donating three hours once or twice a month on Thursday or Saturdays.
- **Help us compute.**
Share your computer skills with those who are just learning.
- **Help us sort and categorize current items in the museum.**
- **Help us with some carpentry and other maintenance projects.**
- **We need representation on the board from the Wauna and Horseshoe Lake area.**

Call 253.884.2511 or 253.884.5403 to find out what skills you can contribute to your museum.

KPHS 2012 Board Members

President

Judy Mills

Vice President

Joyce Niemann

Treasurer/Membership

Dulcie Schillinger

Secretary

Mavis Brown

Docent Calendar

Shirley Olson

Fund Raising

Connie Hildahl

Store Manager

Vickie Swenning

Publicity

Colleen Slater

Special Projects

Don and Judy Mills

Members at Large

Colleen Slater – Vaughn

Betty Van Slyke – Vaughn

Shirley Olson – Key Center

Marge Radonich – Longbranch

Cathy Williams – Home

Newsletter

Cathy Williams